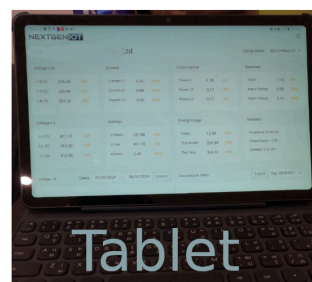
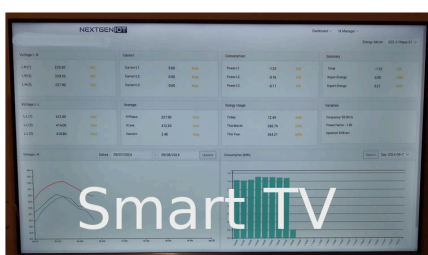


The Energy Logger is a powerful and multi-functional device designed to monitor voltage and current with precision. It delivers accurate readings of power and power factor, capturing both peak and average values for thorough data analysis. Voltage is seamlessly measured through the standard mains lead, while current is detected using Current Transformers (CTs). Ideal for both quick spot checks and extended monitoring, this device is a must-have for effective energy management.

Why do you need a Smart Energy Logger?

1. **Accurate energy monitoring** provides you with precise and necessary data for decision-making regarding your energy usage
2. **Comprehensive data analysis** enables you to analyze energy consumption using line graphs, bar charts, and various reports. With these insights, you can identify inefficient energy use patterns and make adjustments at optimal times, reducing energy costs
3. **Easy installation** allows it to work in parallel with the main meter to send data to the cloud. Voltage measurement is done by connecting to the circuit breaker, while the current is detected using Split Core Current Transformers (CTs) and connected to the internet, making it quick and easy to start using
4. **Versatility for various uses**, such as random electricity checks or continuous data collection. The Smart Energy Logger meets these needs. Its compact design makes it suitable for various applications, from residential to industrial use
5. **Reduced energy management costs** as the Smart Energy Logger enables real-time remote monitoring of electrical data. Employees no longer need to manually record electricity readings at the meter
6. **Quick display of results** on various devices such as smart TVs, mobile devices and computers



NextGen Energy Loggers

- **Model NG485T** for 3-phase systems
- **Model NG485** for single-phase systems

Each set includes a Digital Meter, an additional box for recording data to a Micro SD Card, and sending data to the cloud via Wi-Fi and IoT Platform user account.

Web Dashboard includes:

- Real-time Energy Data
- Volts, Amp, Watt Line Chart
- Hourly Consumption (kWh) Chart
- Web, CSV, and PDF Reports
- History Record
- Hourly Volt Amp
- Consumption - Day
- Consumption - Month

Pricing:

- NG485T (3-Phase) priced at 280 AUD
- NG485 (Single Phase) priced at 90 AUD

Note:

- Data stored on the cloud is valid for 2 years. Users can export data as CSV files
- For Cloud Accounts with more than 5 devices, an annual license must be purchased for every additional 10 licenses

We are pleased to assist customers in getting the most out of their **NextGen Energy Loggers**, maximizing the value of their investment. Please don't hesitate to contact our team if you have any questions, such as adding more meters per data logger, requesting additional reports, or setting up conditions for controlling various IoT devices.

